



Explore 7 Coffee Maker

E7CM1-50MT

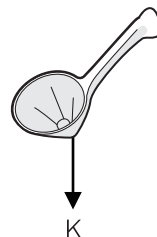
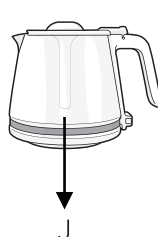
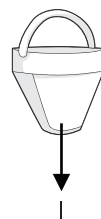
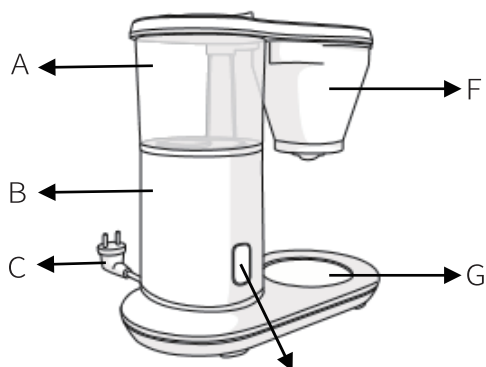


EN INSTRUCTION BOOK
CNT 說明手冊

Appendix

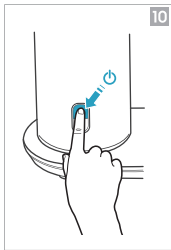
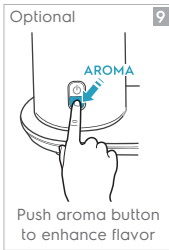
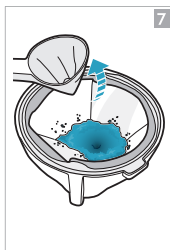
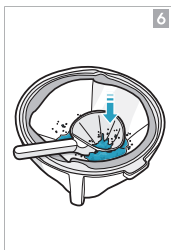
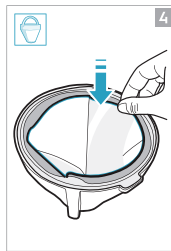
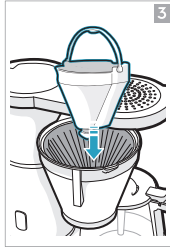


COMPONENTS

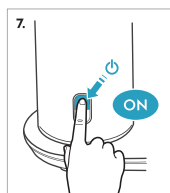
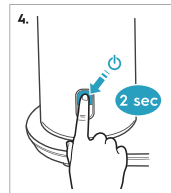
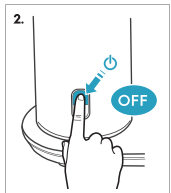
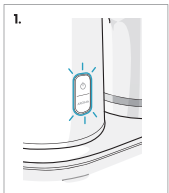


HOW TO USE THE PRODUCT

■ Max 1250ml (10 cups)



Descaling alarm



INSTRUCTION MANUAL

Graphics and drawings in this manual are solely for illustration purposes and are subject to variations from actual product.

EN

CNT

SAFETY ADVICE



Read the following instruction carefully before using the appliance for the first time.

This appliance is not intended for use by persons (including children) with reduced physical, sensory or mental capabilities, or lack of experience and knowledge, unless they have been given supervision or instruction concerning use of the appliance by a person responsible for their safety. Children should be supervised to ensure that they do not play with the appliance.

If the supply cord is damaged, it must be replaced by the manufacture, its service agent or similarly qualified persons in order to avoid a hazard.

This appliance can be used by children aged from 8 years and above if they have been given supervision or instruction concerning use of the appliance in a safe way and if they understand the hazards involved. Cleaning and user maintenance shall not be made by children unless they are older than 8 and supervised. Keep the appliance and its cord out of reach of children aged less than 8 years.

The appliance must not be immersed.

This appliance is intended to be used in household and similar application such as:

- staff kitchen areas in shops, offices and other working environments;
- farm house;
- by clients in hotels, motels and other residential type environments;
- bed and breakfast type environments.

The appliance may only be connected to a power supply whose voltage and frequency comply with the specifications on the rating plate.

Never use or pick up the appliance if - the supply cord is damaged, - the housing is damaged.

The appliance must only be connected to an earthed socket.

If the appliance or the supply cord is damaged, it must be replaced by the manufacturer, its service agent or similarly qualified person, in order to avoid hazard.

Always place the appliance on a flat, level surface.

Never leave the appliance unattended while connected to the supply mains.

The appliance must be switched off and the mains plug withdrawn each time after use, before cleaning and maintenance.

The appliance and accessories become hot during operation. Use only designated handles and knobs. Allow to cool down before cleaning or storage.

The mains cable must not come into contact with any hot parts of the appliance.

Do not immerse the appliance in water or any other liquid.

Do not exceed the maximum filling volume as indicated on the appliances.

Do not use or place the appliance on a hot surface or near source of heat.

This appliance is intended for domestic use only. The manufacturer cannot accept any liability for possible damage caused by improper or incorrect use.



DISPOSAL

This symbol on the product or on its packaging indicates that the product may not be treated as household waste. To recycle your product, please take it to an official collection point or to an Electrolux service center that can remove and recycle the battery and electric parts in a safe and professional way. Follow your country's rules for the separate collection of electrical products and rechargeable batteries.



Recycle the materials with the symbol . Put the packaging in the applicable containers to recycle it. Help protect the environment and human health and to recycle waste of electrical and electronic appliances.

Electrolux reserves the right to change products, information and specifications without notice.

COMPONENTS

EN

CNT

- | | | | |
|----------------------------|-------------------------|----------------------------|-----------------------|
| A. Water tank | D. On/off button | G. Keep warm plate | J. Glass jar |
| B. Brewer main body | E. Aroma button | H. Filter basket | K. Aroma spoon |
| C. Plug | F. Swivel basket | I. Permanent filter | |

Some components may only be available in some models.

USING THE PRODUCT

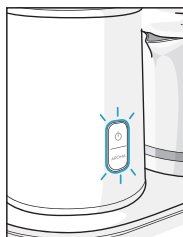
Please refer to the graphic instructions on page 2.

1. When using the brewer for the first time, wash the components H, I, J, K.
2. Slide out the Swivel basket (F)
3. Introduce the filter basket (H).
4. Place the permanent filter (I) or a standard paper filter inside the filter basket (H)
5. Add the desired ground coffee quantity (recommendation 60g of coffee per 1L of water. (7.5g coffee per cup))
6. For added strength, press the aroma spoon (K) into the coffee powder.
7. Remove the spoon and your coffee will have a cone-shaped indent.
8. Add the desired water quantity (Max capacity 1.25L, around 10 cups)
9. For brewing with an extra boost of flavor, push the aroma button (E). This is optional.
10. Push the ON/OFF button (D) to start brewing.
11. Wait for the brewing process to finish. For the models with glass jar and keep warm plate, please mind that this plate will remain warm for 30 minutes after the brewing has finished.

Cleaning and Care

To maintain a great tasting coffee and the lifespan of your brewer, a descaling cycle should be performed on a regular basis.

1. The brewer will advise when it is time for a descaling cycle by pulsing a red light around the button area (D+E).



2. Push the On/off button (D) to turn off the brewer.
3. Fill in the water tank (A) with 7 cups of white vinegar (5% acetic acid) and 3 cups of water. Place the coffee jug with the lid on the warming plate. Allow the descaling solution to work for approximately 15 minutes.
4. Push the On/off button (D) for 2 seconds.
5. Wait for the descaling solution to percolate through.
6. Repeat the procedure a second time using clear water.
7. Push the On/off button to switch on the brewer.
8. Wait for the brewing time to finish. If necessary, repeat the descaling procedure.
9. Rinse the coffee jar, jar lid and filter basket thoroughly under running water.

說明手冊

手冊內的插圖僅做說明使用，可能與實際產品不同。

首次使用本機時，請詳閱下列說明。保留此說明手冊以備日後參考。

EN

CNT



初次使用電器前請詳閱如下說明

使用本機前，請先拆除並丟棄所有包裝材料。

本電器設計不適合體格、感官或精神能力不健全，或者是缺少經驗和知識的人士（包括兒童）使用，除非他們已透過負責他們安全的人士獲得有關使用本電器的監督或說明。請將本電器及其電源線放在兒童拿不到的地方。請監督兒童確保他們不會將本機當成玩具。

如果電源線損壞且/或防護外殼損壞，請避免再使用或收拾整理此機器，應聯絡伊萊克斯 (Electrolux) 或其服務代理商協助更換，以避免發生危險。

請勿使用其他製造商製造的附件或零件，或非由伊萊克斯 (Electrolux) 出售的配件或零件，這可能會造成人員傷害。

本電器在有人員監控或給予電器安全使用之指示且他們了解相關危險之下，可供8歲以上孩童使用。除非在有人監督的情況下，否則不應由兒童清潔和保養本機。不得讓8歲以下孩童接觸本電器和其電線，避免造成危險。

請勿將此電器、電源線或插頭浸入水中或其他液體中。

本電器僅可連接至電壓及頻率符合定額規格之電源供應器。

本電器僅可聯結至接地插座。

請務必將本電器放置在平坦且平穩的乾燥表面上。

不得於電器連接至主電源時棄置不顧。

此電器無人看管或在更換配件、進行清潔保養前，請務必關閉本電器並切斷其電源。

操作期間電器和配件會變熱。請使用機器或配件上的握把或開蓋取出內容物。清潔或儲放前請先使其冷卻，避免燙傷。

主電線不得接觸任何電器發熱部位。

注水時請留意不得超過電器上標示之最大容量。

操作機器時，請勿在桌子或檯面邊緣使用或放置此機器，也需留意避免放置於熱氣體、瓦斯爐、電爐或加熱烤爐旁。

本電器僅供一般家庭中使用或相似用途例如：

- 店家、辦公室和其他工作環境內的員工廚房；
 - 飯店、旅社、民宿和其他居家類型環境中供客人使用。
- 任何不當使用所導致的損壞，伊萊克斯將不負任何責任。

警告：為防止因意外復位熱熔斷路器造成的危險，本產品不得透過外部開關裝置控制，例如計時器，或連接到由公共設施定期打開和關閉的線路。

丟棄



產品或包裝上的此符號表示不得將本產品視為家庭垃圾處理。回收時，請將產品交由當地回收服務廠商處理，或聯絡當地政府機構尋求協助，以便安全拆除電器電池/零件並正確回收。遵守您所在國家針對電器產品回收和充電電池的規定。

伊萊克斯 (Electrolux) 保留更改產品、資訊和規格的權利，恕不另行通知。

零組件

- | | | | |
|----------|-----------|------------|--------|
| A. 水箱 | D. 開/關鍵 | G. 保溫盤 | J. 玻璃壺 |
| B. 咖啡機主機 | E. 濃郁模式 | H. 過濾槽 | K. 咖啡匙 |
| C. 插頭 | F. 旋轉咖啡粉槽 | I. 永久性咖啡濾網 | |

部分配件僅為某些型號提供，請以實際出貨產品為主

開始使用

請參考第2頁的操作圖示說明

- 1.初次使用咖啡機時，請先清洗H, I, J, K等零配件。
- 2.將旋轉咖啡粉槽（F）滑出
- 3.將過濾槽（H）放入。
- 4.接著將永久性咖啡濾網（I）或1張標準濾紙放入過濾槽（H）內
- 5.加入理想的研磨咖啡量，建議每60g咖啡搭配1公升的水（1杯咖啡約使用7.5g咖啡粉）。
- 6.如要增強咖啡香氣，將咖啡匙壓入咖啡粉末內。
- 7.將咖啡匙移開後，咖啡粉將出現錐狀凹槽。
- 8.加入適當的水量（最大容量1.25公升，約10杯）
- 9.如希望再加強咖啡風味，請先按濃郁模式鍵（E），接著再按下開/關鍵（D）開始煮咖啡
- 10.如不需要使用濃郁模式功能，請直接按下開/關鍵（D）啟動咖啡機。

接著等待沖煮程序完成。針對附有玻璃壺與保溫盤的型號請注意保溫盤在咖啡沖煮完成後可保溫約30分鐘。

注意:咖啡實際沖煮量可能比注入水箱中的水量少，因加熱過程會導致水蒸發流失，同時咖啡的種類與粉研磨的粗細，也可能導致咖啡粉的吸水性不同，吸水性會讓部分的水殘留於咖啡渣中。

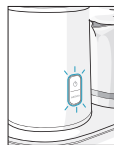
注意:每杯咖啡(125ml)建議使用7.5g咖啡粉，此為建議重量，使用者可依實際需求進行調整。

保養與清潔

請參考第2頁的除垢圖示說明

為了確保每次沖煮的咖啡皆保有絕佳風味，同時欲維持產品的使用壽命，我們建議您定期為咖啡機做除垢清潔。

- 1.當需要除垢時，咖啡機（D+E）按鍵區附近將會有紅光閃爍。



- 2.請先按下開/關鍵（D）關閉電源。
- 3.欲執行除垢工作，可使用玻璃壺於水箱中倒入約7杯的白醋(醋酸濃度5%)與3杯水。將含蓋的咖啡玻璃壺放置到保溫盤上，讓除垢的溶液停留約15分鐘。
- 4.按下開/關鍵（D）約2秒
- 5.等待除垢溶液完全滲出至玻璃壺中。
- 6.接著以清水重複相同的步驟。
- 7.按下開/關鍵（D）啟動咖啡機。如需要，請重複此除垢步驟。
- 8.等待清水完全滲出至玻璃壺中即完成。
- 9.接著徹底沖洗咖啡壺、壺蓋和永久性濾網過濾槽。

客戶服務

聯繫客服部門時，請確保您已掌握了以下資訊：型號、PNC、序號。此類資訊可在機身上產品標籤上找到。由於Electrolux堅持持續開發產品的政策，本手冊之中提及的產品規格、顏色、詳細資訊等等均可能隨時更改，恕不另行通知。

有鑒於世界各國對綠色環保意識的重視，伊萊克斯依循RoHS「危害性限制物質指令」，誠實標示產品化學物質含量，關於本產品的RoHS聲明書，請上伊萊克斯官網->「支援服務」->「RoHS聲明書」，依產品類別及型號檢索。

<http://www.electrolux.com.tw/Support/Customer-Care/>

客服資訊

新加坡商伊萊克斯股份有限公司 台灣分公司

22065新北市板橋區縣民大道2段68號9F

免付費客服專線: 0800-888-259

傳真: 886-2-8964-5269 信箱: service.tw@electrolux.com 網站: www.electrolux.com.tw

