



# Electrolux

## Instruction Book

Water kettle

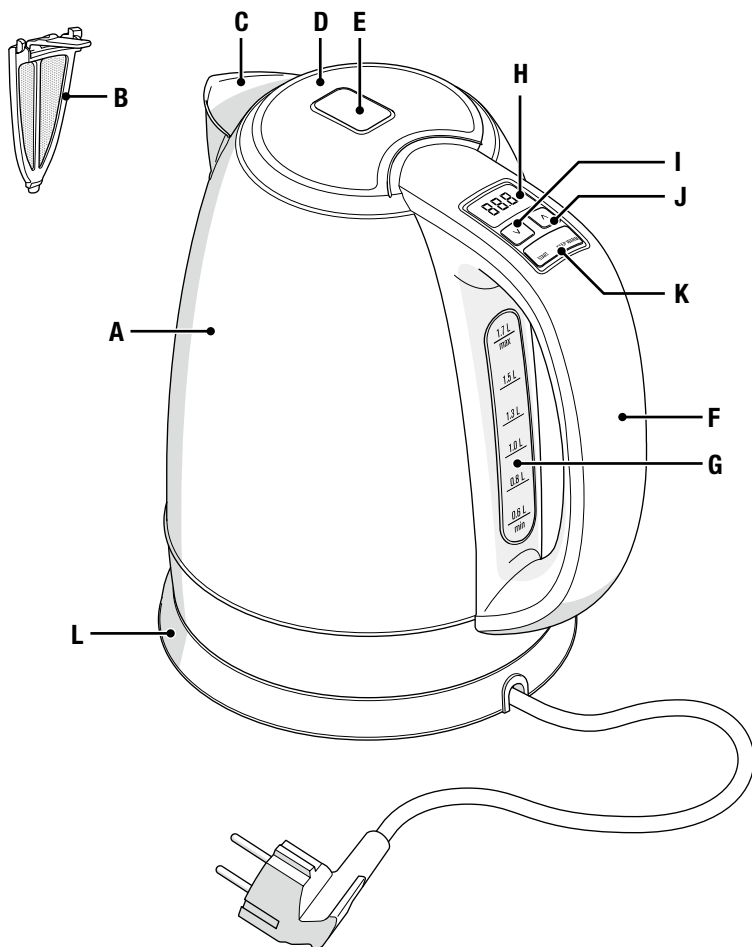
EEK7700S

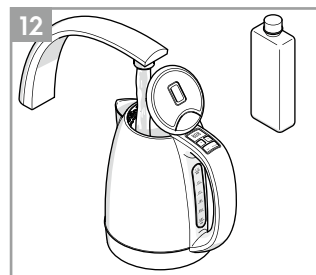
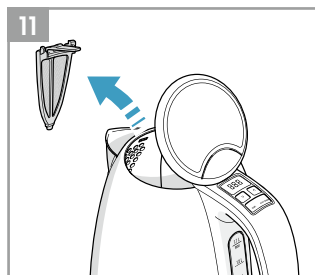
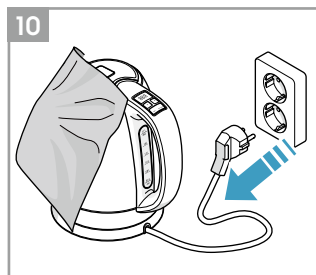
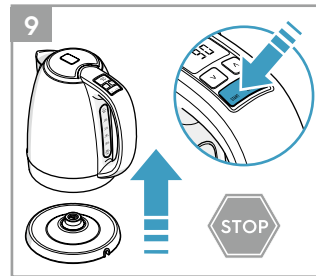
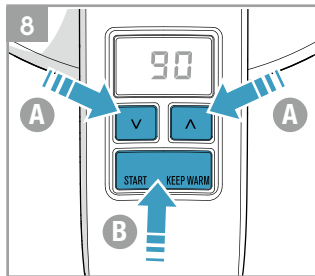
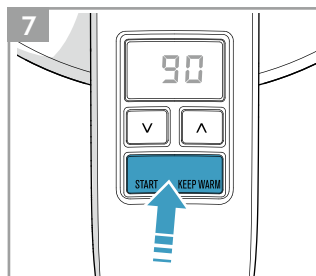
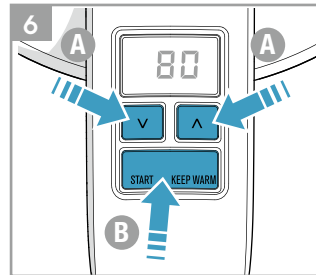
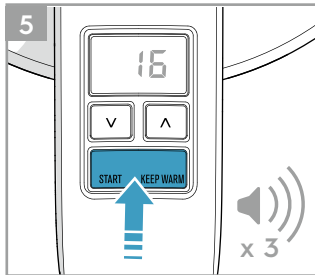
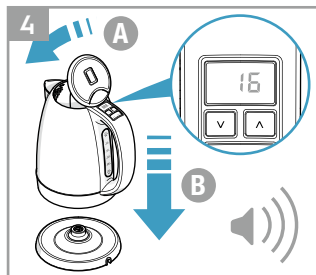
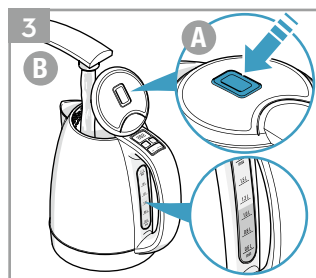
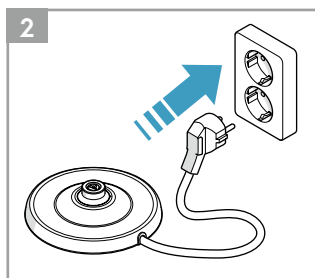
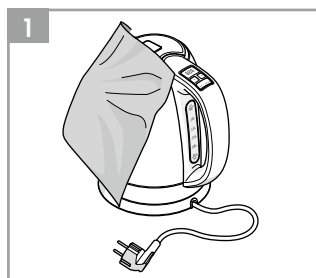
EEK7700K

EEK7700W

EEK7700R







## INSTRUCTION MANUAL

Graphics and drawings in this manual are solely for illustration purposes and are subject to variations from actual product.


Read all instructions carefully before using the appliance for the first time.

Keep this manual for future reference.

## COMPONENTS

- |                                 |   |
|---------------------------------|---|
| <b>A.</b> Jug                   | <b>G.</b> Water level indicator         |
| <b>B.</b> Removable mesh filter | <b>H.</b> Display                       |
| <b>C.</b> Spout                 | <b>I.</b> Temperature selector down (V) |
| <b>D.</b> Lid                   | <b>J.</b> Temperature selector up (Λ)   |
| <b>E.</b> Opening lid button    | <b>K.</b> START/KEEP WARM button        |
| <b>F.</b> Handle                | <b>L.</b> Separate base and mains cable |

## SAFETY ADVICE

- This appliance is not intended for use by persons (including children) with reduced physical, sensory or mental capabilities, or lack of experience and knowledge, unless they have been given supervision or instruction concerning the use of the appliance by a person responsible for their safety.
- Keep the appliance and its power cord out of reach of children. Children should be supervised to ensure that they do not play with the appliance.
- Cleaning and user maintenance shall not be performed by children without supervision.
- The appliance can only be connected to a power supply which voltage and frequency comply with the specifications on the rating plate.
- The appliance must only be connected to an earthed mains socket.
- Never leave the appliance unattended while connected to the supply mains.
- Never use or pick up the appliance if
  - the power cord is damaged, or
  - the housing is damaged.
- If the appliance or its power cord is damaged, it must be replaced by Electrolux or its service agent in order to avoid hazard.
-  Do not immerse the appliance, its power cord or plug in water or any liquid.
- Do not use or place the appliance on sink, on hot surface, near heat source, or near the edge of table or counter.
- Always place the appliance on a flat, level and dry surface.
- Caution: Ensure that the appliance is switched off before removing the kettle from the base.
- Do not move the appliance when it is in operation.
- Never operate the appliance without the lid.
- Warning: Do not open the lid while the water is boiling, or immediately after the water is boiled.
- Failure to do so may lead to injury due to sudden ejection of steam.
- Position the lid so that steam is directed away from the handle.
- Caution: Do not exceed the maximum filling volume as indicated on the appliance, as there is risk of boiling water splashing out, which may cause scalding or burn.
- Do not operate the appliance without any water in it.
- The kettle is only used for boiling water. Never use the kettle to boil any other liquids.

- The appliance and its accessories become hot during operation. Use only designated handles and knobs. Allow to cool down before cleaning and maintenance.
- Caution: The surfaces around the heater are subjected to residual heat after use.
- The appliance must be switched off and mains plug removed from wall socket each time after use, and before cleaning and maintenance.
- Do not let the power cord come into contact with hot surfaces or hang over the edge of a table or counter.
- The kettle can only be used with the base unit provided.
- This appliance is not intended to be operated by means of an external timer or separate remote control system.
- This appliance is for indoor use only.
- This appliance is intended for domestic use only. Electrolux will not accept any liability for possible damage caused by improper or incorrect use.

## GETTING STARTED


1. **Before first use**, wipe the inside and outside of the kettle with a damp cloth.
2. **Place the base unit on a firm and flat surface.** Plug the mains plug into a wall socket. Extra cord length can be wound up at the bottom of base unit.
3. Press the opening lid button to open the lid, pour water into the kettle. Make sure water level is visible in the water level indicator, but not exceeding the Max. mark. Fill at least 0.6 L to ensure that the temperature shown on the display is reliable.
4. **Close the lid and make sure it snaps in correctly.** Place the kettle onto the base. The kettle beeps to indicate that it is ready for use. The display shows the water temperature. Press the START/KEEP WARM button once to start boiling water. When the water boils, the kettle beeps 1 time and switches off automatically.
5. **START/KEEP WARM button and LED light.** The left LED light on the START/KEEP WARM button indicates boiling is in progress, the right LED light indicates KEEP WARM function is active.
6. **To heat water to selected temperature (not boiling):** Press the buttons **V** or **Λ** to select temperature. Press the START/KEEP WARM button once. When the selected temperature is reached, the kettle beeps 1 time and switches off automatically.
7. **To heat water and keep it warm at selected temperature:** Press the buttons **V** or **Λ** to select temperature. Press the START/KEEP WARM button twice. (The left LED light on the START/KEEP WARM button indicates boiling is in progress, the right LED light indicates KEEP WARM function is active). When the selected temperature is reached, the kettle beeps 1 time and keeps the water warm for 30 minutes.
8. **The automatic switch off function.** When the water has boiled or the kettle is moved from the base, it will switch off automatically.
9. If you wish to stop the heating process before the water is boiling, simply press the START/KEEP WARM button twice.

## CLEANING AND CARE

10. Before cleaning, always unplug the appliance. Never rinse or immerse the kettle or base unit in water. Just wipe with a damp cloth, using no abrasive detergents. Occasionally rinse out the kettle with clean water.
11. To clean the mesh filter, slide the mesh filter (B) and lift it out. Rinse under clean, running water, and insert it back into the kettle in the correct orientation.  
Cleaning the heating plate – superficial spots of rust may appear on the base unit. Remove with a stainless steel cleaning agent.
12. Decalcifying is recommended regularly, depending on water hardness. Fill the kettle with water and decalcifier according to decalcifier product instructions. Do not boil the solution as it may foam over. Afterwards, rinse kettle thoroughly with fresh water.

## RECOMMENDED TEMPERATURE CHART


Temperature settings	Food and beverage
40-60 °C	Baby mixtures
80 °C	Delicate teas (green/white)
90 °C	Instant coffee or soup
100 °C	Black tea

 **Caution!** This appliance has a temperature selection function. In case the selected temperature is below 100°C, ensure the water is first boiled before selecting the preferred temperature.


## TROUBLESHOOTING

PROBLEM	POSSIBLE CAUSE	SOLUTION
The appliance switches off before boiling.	Too much lime scale at the base of the kettle.	Run the decalcifying procedure.
The appliance does not switch off.	The lid is not closed.	Insert the mesh filter properly. Close lid until it locks.
The appliance cannot be switched on.	After operating with little or no water, the appliance has not cooled down sufficiently.	Allow to cool a short time and try again.
Water leakage at the bottom of the appliance.	Residual water from previous use.	Dry the appliance before using it
	Water over flow the “max” level indication.	Do not fill the water above the “max” level indicator.
	Kettle was tilted towards handle.	Do not tilt the appliance backward.
Error message E1, E2, E3 or ERR is shown on the display.		Allow to cool a short time and try again. If the problem persists, please contact Electrolux Service Centre.

## DISPOSAL

Recycle the materials with the symbol . Put the packaging in applicable containers to recycle it. Help protect the environment and human health and to recycle waste of electrical and electronic appliances.



Do not dispose appliances marked with the symbol  with the household waste. Return the product to your local recycling facility or contact your municipal office.

## CUSTOMER CARE AND SERVICE

When contacting Service, ensure that you have the following data available: **Model, PNC, Serial Number**. The information can be found on the rating plate.

*Due to the Electrolux policy of continual product development; specifications, colours, and details of our products and those mentioned in this manual are subject to change without notice.*

## 說明手冊

手冊內的插圖僅做說明使用，可能與實際產品不同。


首次使用本機時，請詳閱下列說明。

保留此說明手冊以備日後參考。

## 組件圖示

- |          |                              |
|----------|------------------------------|
| A. 壺     | G. 水位顯示器                     |
| B. 可卸式濾網 | H. 溫度顯示螢幕                    |
| C. 壺嘴    | I. 溫度調低 (V)                  |
| D. 蓋子    | J. 溫度調高 (^)                  |
| E. 開蓋按鈕  | K. START/KEEP WARM (開啟/保溫)按鈕 |
| F. 手把    | L. 獨立底座和電源線                  |

## 安全建議

- 本產品不適合身體、感官或精神機能有障礙或缺乏相關經驗和知識的人（包括兒童）使用，除非在其安全負責人的看管或指導下才可使用。
- 將本產品及其電源線放在兒童無法拿取的地方。應留意家中兒童，避免其將本產品當作玩具把玩。
- 除非有大人監護，否則不宜讓兒童清理或維護本產品。
- 本產品只能連接電壓和頻率均符合機身標籤上規定的電源。
- 必須將本機器連接到已接地的電源插座。
- 嚴禁在無人照管的情況下，將本產品與電源接通。
- 下列情況下，切勿使用或拿起本產品：
  - 電源線受損，
  - 外殼受損。
- 如果本產品或電源線受損，必須由伊萊克斯或其代理商人員進行更換，以避免發生危險。
-  不得將本產品浸入水中或任何其他液體中。
- 不得將此產品放在水槽、高溫表面、靠近熱源或是桌子的邊緣使用。
- 務必將本產品置於平穩、乾燥的表面。
- 注意：在將壺身從底座上移開前，請確保將電源關上。
- 請勿在本產品工作時移動它。
- 請勿在未蓋上壺蓋的情況下操作本產品。
- 警告：請勿在壺水仍在沸騰時打開壺蓋，或在壺水沸騰之後立即打開壺蓋。否則，可能由於水蒸氣瞬間噴出而引起人身傷害。
- 請務必放置壺蓋，確保水蒸氣不會直接噴在把手上。
- 注意：注水應不超過最高水位線，否則沸水可能溢出，存在燙傷或灼傷的風險。
- 請勿空燒本產品。
- 本產品僅可用於燒水，請勿用於加熱其他任何液體。
- 本產品在工作時自身及其附件會變熱。只能使用指定的把手和旋鈕。待冷卻後再進行清潔或維護。
- 注意：使用過後，熱水壺表面仍可能殘留熱量。
- 每次使用本產品後（或在清潔和維護之前）必須關閉電源並從插座上拔下電源插頭。



- 請勿讓電源線接觸到灼熱表面或者懸掛在桌子或櫃子的邊緣處。
- 本電水壺僅可搭配隨附的底座使用。
- 本產品不宜使用外部計時器或者獨立的遙控系統操作。
- 本產品僅供室內使用。
- 本產品僅供家庭使用。伊萊克斯對因不適當或不正確使用本產品所導致的可能的損害不負任何責任。

## 入門


1. **在首次使用之前：**用一塊濕布擦拭電茶壺內外。
2. **將底座放置於穩固而平坦的表面。**將電源插頭插入電源插座。過長的電源線可以捲入底座底部收納。
3. 按下開蓋按鈕打開壺蓋，向壺內注入水。確認水位出現在水位顯示器範圍內，但未超過最大水位。為確保溫度顯示螢幕上顯示的溫度可靠，請至少注入0.6L水。
4. **合上壺蓋**，確認其正確扣緊。將電熱水壺放到底座上。此時電熱水壺會發出嗶聲，表示其已準備就緒可以使用。顯示器上隨即顯示水溫。按下 START ( 開啟 ) /KEEP WARM ( 保溫 ) 按鈕。水沸後，電熱水壺發出1次嗶聲，並自動關閉。
5. START/KEEP WARM 按鈕左側的LED燈表示正在燒水，右側的LED燈表示保溫功能啟用。
6. **如需將水加熱到選定的溫度（不沸騰）：**按下 **✓** 或 **∧** 按鈕並選擇溫度。按 START ( 開啟 ) /KEEP WARM ( 保溫 ) 按鈕。當水溫達到選定的溫度後，電熱水壺發出1次嗶聲，並自動關閉。
7. **如需煮沸水後保持選定的溫度：**按下 **✓** 或 **∧** 按鈕並選擇溫度。按 兩次START ( 開啟 ) /KEEP WARM ( 保溫 ) 按鈕。當水溫達到選定的溫度後，電熱水壺發出1次嗶聲，並保溫30分鐘。
8. **自動關閉功能。**當水已煮沸或從底座移開電熱水壺時，本產品將自動關閉。
9. 若您想在水煮沸之前停止加熱，請按兩次START/ KEEP WARM 按鈕來取消。

## 清潔與保養須知

10. 清潔之前，務必拔下電源插頭。切勿在水中清洗電熱水壺或底座，或將其浸入到水中。只可採用非摩擦性清潔劑，用濕布擦拭。偶爾用清水沖洗一下電熱水壺外部。
11. 如要清潔濾網，請取出濾網，將其至於清水下沖洗。清潔加熱底板——底座上可能會出現鏽跡斑點。採用不銹鋼清潔劑去除此類鏽跡。
12. **建議根據水質硬度，定期除水垢。**將電熱水壺填滿水，依據除水垢產品說明進行除垢。請勿煮沸溶液，因為溶液可能會產生泡沫溢出。最後，使用清水徹底沖洗電熱水壺。

## 建議水溫表


溫度設定	食物與飲料
40-60 °C	嬰兒副食品
80 °C	玲瓏茶 ( 綠茶/白茶 )
90 °C	即溶咖啡或湯
100 °C	紅茶


 **注意：**本產品具有溫度調整功能，當使用其他沸點溫度時，必須將生水先煮沸後，再做其他溫度調整。

## 故障排除

故障	可能原因	解決方法
水還沒燒開，產品就自動斷電。	壺身底部已累積過多水垢。	進行除鈣作業。
產品無法自動斷電。	壺蓋未蓋上。	正確插入濾網，蓋上壺蓋，直至鎖緊為止。
產品電源無法開啟。	上一次加熱時水量不足，導致機器來不及冷卻。	讓電茶壺冷卻一段時間後再行使用。
產品底部漏水。	上一次使用時留有殘水。	使用前請確認電茶壺是乾燥的。
	水位超出了最高水位線。	注水應不超過最高水位線。
	壺身向把手傾斜。	請勿向後傾斜本產品。
在顯示器上出現錯誤消息E1、E2、E3或ERR。		讓本機冷卻片刻，然後再試一次。如果該問題繼續存在，請聯絡伊萊克斯客服中心。

## 棄置

標有  標識的產品均可以回收。您可將產品所有部件放入適當的容器內再回收。為了營造環保永續的生活環境，請配合並回收廢棄的電器用品。

請勿將標有  記號的產品當作家庭垃圾丟棄。回收時，請將產品交由當地回收服務廠商處理，或聯絡當地政府機構尋求協助。

## 客戶服務

聯繫客服部門時，請確保您已掌握了以下資訊：**型號、PNC、序號**。此類資訊可在機身上產品標籤上找到。

由於Electrolux堅持持續開發產品的政策，本手冊之中提及的產品規格、顏色、詳細資訊等等均可能隨時更改，恕不另行通知。

有鑒於世界各國對綠色環保意識的重視，伊萊克斯依循RoHS「危害性限制物質指令」誠實標示產品化學物質含量，關於本產品的RoHS聲明書，請上伊萊克斯官網-->「支援服務」-->「RoHS聲明書」，依產品類別及型號檢索。

<http://www.electrolux.com.tw/Support/Customer-Care/>

## **中国**

伊莱克斯 ( 中国 ) 电器有限公司 上海小家电分公司  
中国, 上海, 闸北区共和新路1968号大宁国际广场  
8号楼606室  
办公电话: +86 21 3178 1000  
传真: +86 21 3387 0368  
售后服务: +86 800 820 0096  
网站: www.electrolux.com.cn

## **台灣**

新加坡商伊萊克斯股份有限公司 台灣分公司  
22065新北市板橋區縣民大道2段68號9F  
免付費客服專線: 0800-888-259  
傳真: 886-2-8964-5269  
電郵: service@electrolux.com.tw  
網站: www.electrolux.com.tw

## **KOREA**

Electrolux Korea limited  
9F, Pine Avenue B,  
100 Euljiro, Jung-gu, Seoul, Korea 04551  
Korea  
Tel : +(82) 2 6020-2200  
Fax: +(82) 2 6020-2271-3  
Customer Care Services : +(82) 1566-1238  
Email : homecare.krh@electrolux.com  
Website: www.electrolux.co.kr

## **INDONESIA**

PT Electrolux Indonesia  
Gedung Plaza Kuningan  
Menara Utara 2nd Floor, Suite 201.  
Jl. HR Rasuna Said kav C 11-14, Karet Setiabudi  
Jakarta Selatan 12940  
Indonesia  
Tel: +(62) 21 522 7099  
Fax: +(62) 21 522 7097  
Customer Care Services: +(62) 21 522 7180  
Email: customercare@electrolux.co.id  
Website: www.electrolux.co.id

## **PHILIPPINES**

Electrolux Philippines, Inc.  
10th Floor. W5th Avenue Building  
5th Avenue Corner 32nd Street  
Bonifacio Global City,  
Taguig Philippines 1634  
Trunkline: +(63) 2 737 4756  
Domestic Toll Free : 1 800 10 845 care 2273  
Customer Care Services: +(63) 2 845 care 2273  
Email : wecare@electrolux.com  
Website : www.electrolux.com.ph

## **THAILAND**

Electrolux Thailand Co Ltd  
Electrolux Building  
14th Floor 1910 New Petchburi Road  
Bangkapi, Huay Kwang  
Bangkok 10310  
Thailand  
Tel: +(66) 2 725 9100  
Fax: +(66) 2 725 9299  
Customer Care Services: +(66) 2 725 9000  
Email: customercaethai@electrolux.com  
Website: www.electrolux.co.th

## **VIETNAM**

Electrolux Vietnam Ltd  
Floor 9th, A&B Tower  
76 Le Lai Street  
Ben Thanh Ward - District 1  
Ho Chi Minh City  
Vietnam  
Tel: +(84) 8 3910 5465  
Fax: +(84) 8 3910 5470  
Customer Care Services: 1800-58-8899  
Email: vn-care@electrolux.com  
Website: www.electrolux.vn

## **MALAYSIA**

Electrolux Home Appliances Sdn Bhd  
Lot C6, No. 28, Jalan 15/22,  
Taman Perindustrian Tiong Nam,  
40200 Shah Alam, Selangor  
Malaysia  
Customer Care Services Tel: +(60 3) 5525 0800  
Customer Care Services Fax: +(60 3) 5524 2521  
Email: malaysia.customer-care@electrolux.com  
Website: www.electrolux.com.my

## **SINGAPORE**

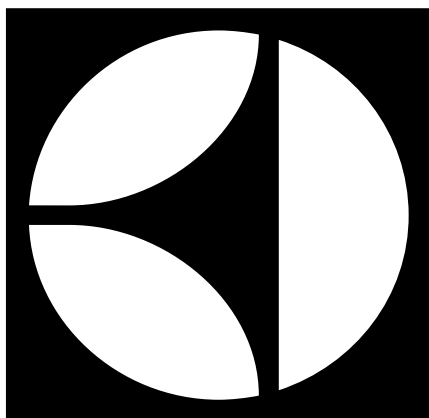
Electrolux SEA Pte Ltd  
1 Fusionopolis Place, Galaxis  
#07-10 (West Lobby)  
Singapore 138522  
Customer Care Services: +(65) 6727 3699  
Fax: +(65) 6727 3611  
Email: customer-care.sin@electrolux.com  
Website: www.electrolux.com.sg

## **AUSTRALIA**

Electrolux Home Products Pty Ltd  
ABN 51 004 762 341  
163 O'Riordan Street, Mascot, NSW 2020, Australia  
Customer Service Phone: 1300 365 305  
Website: www.electrolux.com

## **NEW ZEALAND**

Electrolux Small Appliances  
A division of Electrolux (NZ) Limited  
3-5 Niall Burgess Road, Mt Wellington, Auckland,  
New Zealand  
Phone: (09) 9573 2220  
Customer Service Phone: 0508 730 730  
Website: www.electrolux.com



Share more of our thinking at [www.electrolux.com](http://www.electrolux.com)